

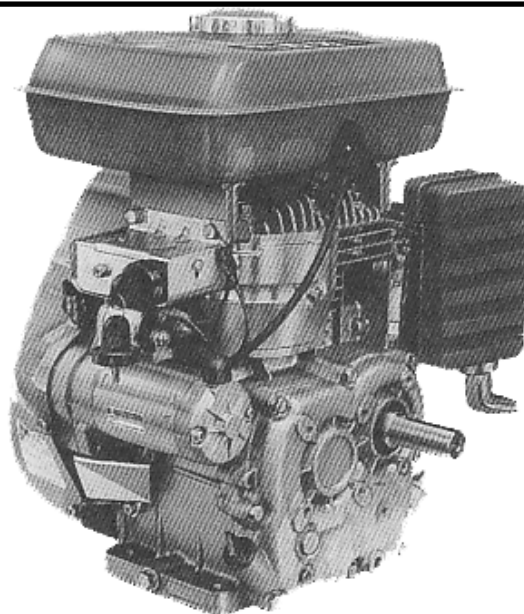
ILLUSTRATED PARTS LIST

KUBOTA

MODEL GS280-GCL-S-CHI-EC

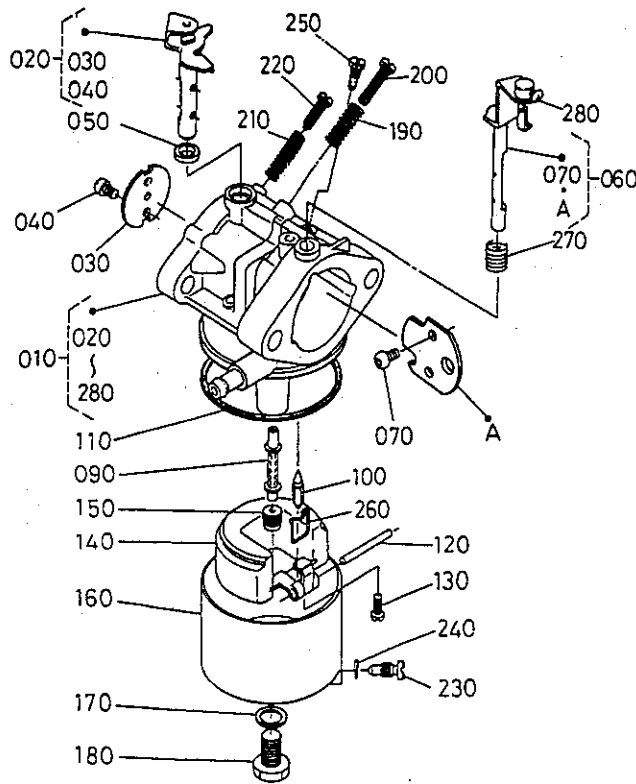
AIR-COOLED ENGINE

ご注文の際は部品番号の前にZKをご記入下さい。



Kubota

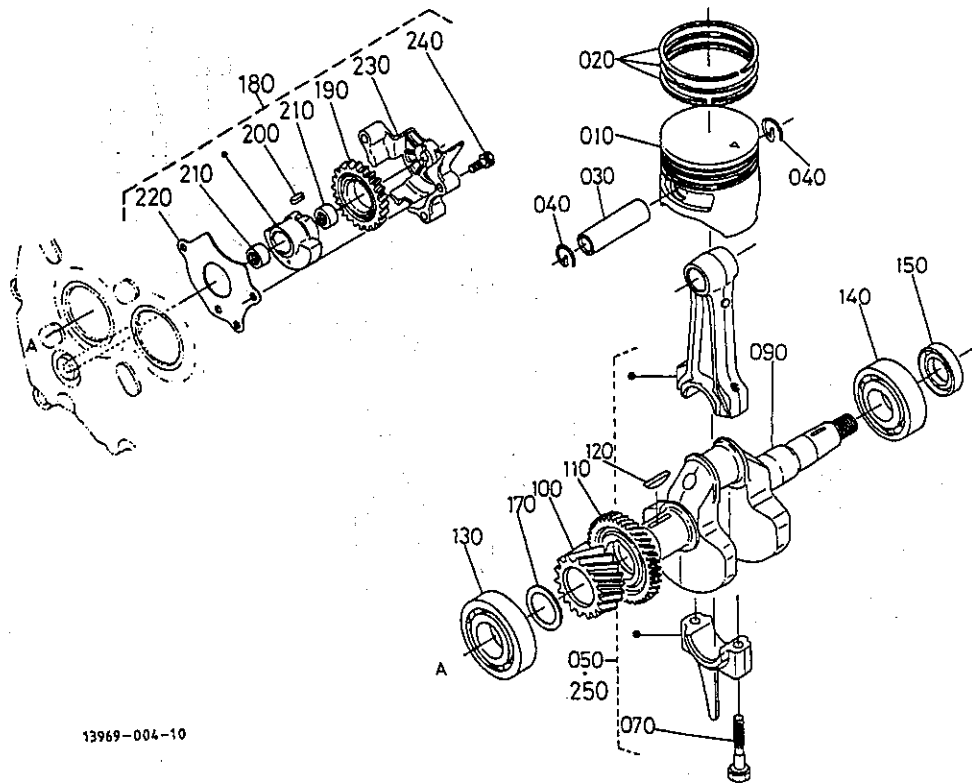
07909-13866
APR. 1997



13969-003-1 0

A:GS280-GCL-S-CHI-EC

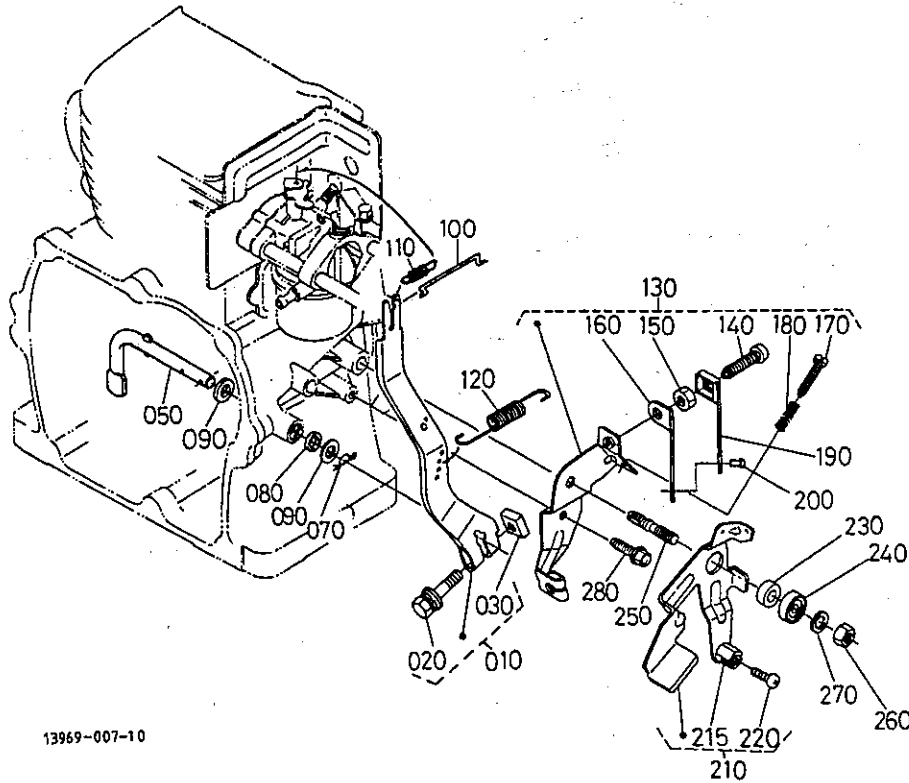
REF.No.	PART No.	PART NAME	Q' TY/S. No.	I. C.	REMARKS
			A		
010	13426-4401-4	ASSY CARBURETTOR	1		
020	12454-4433-0	ASSY SHAFT, THROTTLE	1		
030	12451-4432-0	VALVE, THROTTLE	1		
040	12451-4434-0	SCREW, CROSS	2		
050	12451-4457-0	GASKET, FELT	1		
060	13964-4454-0	ASSY SHAFT, CHOKE	1		
070	12451-4455-0	SCREW, CROSS	2		
080	----	BLANK	-		
090	13971-4412-0	NOZZLE, MAIN	1		
100	13961-4484-0	ASSY VALVE, FLOAT	1		
110	13901-4474-0	GASKET	1		
120	13901-4478-0	PIN, ARM	1		
130	13961-4427-2	SCREW, SET	1		
140	13901-4471-0	FLOAT	1		
150	13382-4411-2	MAIN JET	1		
160	13901-4473-0	CHAMBER, FLOAT	1		
170	13626-4428-0	GASKET	1		
180	13901-4426-0	BOLT	1		
190	13626-4421-0	SPRING	1		
200	13301-4423-0	SCREW, F-FIL-HD	1		
210	13301-4424-0	SPRING	1		
220	13626-4422-0	SCREW, ADJUSTING	1		
230	13901-4483-0	SCREW, DRAIN	1		
240	13901-4595-0	O RING	1		
250	13963-4420-0	MAIN JET	1		
260	13961-4486-0	CLIP, PARTICULAR	1		
270	12752-4456-0	SPRING, RETURN	1		
280	03054-50408	SCREW, PAN-HEAD	1		



13969-004-10

A:GS280-GCL-S-CHI-EC

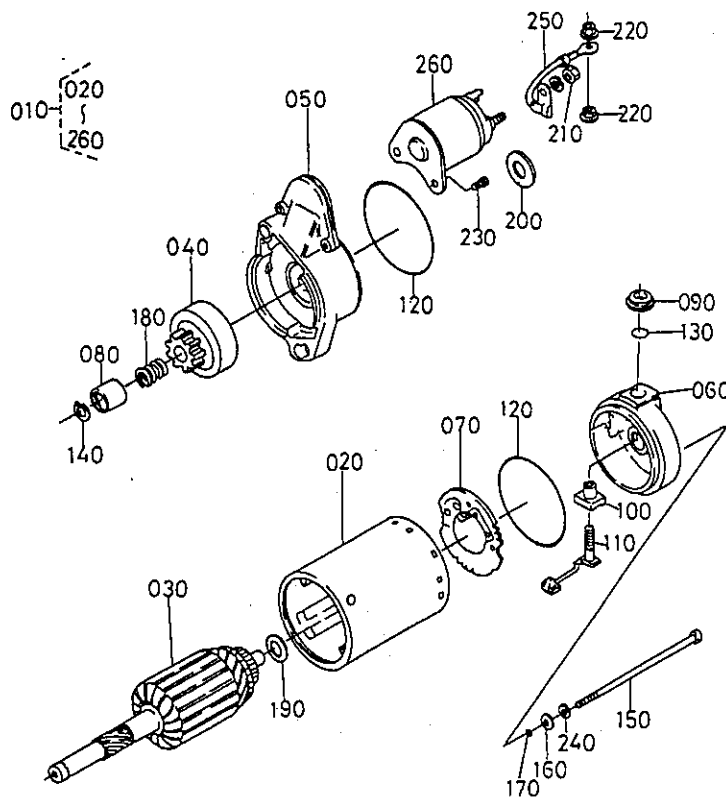
REF.No.	PART No.	PART NAME	Q' TY/S. No.	I. C.	REMARKS
			A		
010	13961-2111-0	PISTON	1		STD
010	13961-2191-0	PISTON	1		+0.50MM
010	13961-2192-0	PISTON	1		+0.25MM
020	13961-2105-0	ASSY PISTON RING	1		STD
020	13961-2109-0	ASSY PISTON RING	1		+0.50MM
020	13961-2110-0	ASSY PISTON RING	1		+0.25MM
030	13961-2131-0	PIN, PISTON	1		
040	13961-2133-0	CIR-CLIP, INTERNAL	2		
050	13961-2201-0	ASSY CONNECTING ROD	1		
060	----	BLANK	-		
070	12401-2214-0	BOLT, ROD	2		
080	----	BLANK	-		
090	13968-2311-0	CRANKSHAFT	1		
100	13961-2411-0	GEAR, CRANK	1		
110	13968-2644-0	GEAR, BALANCER	1		
120	13968-9523-0	KEY, WOODRUFF	1		
130	12621-1630-0	BEARING, BALL	1		
140	08103-06305	BEARING, BALL	1		
150	E3131-2355-0	SEAL, OIL	1		
160	----	BLANK	-		
170	13641-2368-0	SHIM	1		0.20MM
170	13641-1655-0	SHIM	1		0.25MM
170	13641-2362-0	SHIM	1		0.30MM
170	13641-1656-0	SHIM	1		0.35MM
170	13641-2363-0	SHIM	1		0.40MM
180	12424-2630-0	COMP WEIGHT, BALANC.	1		
190	13968-2645-0	GEAR, BALANCER	1		
200	13662-9503-0	KEY, FEATHER	1		
210	13968-2628-0	BEARING, NEEDLE	2		
220	13968-2636-0	PLATE, BALANCER	1		



13969-007-10

A:GS280-GCL-S-CHI-EC

REF.No.	PART No.	PART NAME	Q' TY/S. No.	I. C.	REMARKS
			A		
010	13961-5602-0	ASSY LEVER, GOVERNOR	1		
020	01125-50830	BOLT	1		
030	13961-9202-0	NUT	1		
040	----	BLANK	-		
050	12401-5614-0	SHAFT, GOV. LEVER	1		
060	----	BLANK	-		
070	05515-60800	PIN, SNAP	1		
080	13641-5624-0	GASKET	1		
090	04013-60080	WASHER, PLAIN	2		
100	13961-5635-0	ROD, GOVERNOR CON/ROD	1		
110	13961-5639-0	SPRING	1		
120	12401-5641-0	SPRING, GOVERNOR	1		
130	13965-5701-0	ASSY PLATE, CONTROL	1		
140	12182-9331-0	SCREW	1		
150	02014-50060	NUT	1		
160	13965-5697-0	PLATE, LOCK	1		
170	12182-9341-0	SCREW	1		
180	13641-5686-0	SPRING	1		
190	13965-5696-0	PLATE, LOCK	1		
200	13336-5697-0	RIVET	1		
210	13965-5704-0	COMP LEVER, SP-CONT	1		
215	13901-5746-0	STOPPER, RELEASE	1		
220	03014-50612	SCREW, PAN-HEAD	1		
230	13961-5724-0	COLLAR	1		
240	13961-5765-0	PLATE, PRESSURE	1		
250	13961-9155-0	STUD	1		
260	02114-50080	NUT	1		
270	04512-60080	WASHER, SPRING	1		
280	13901-9102-0	BOLT	1		



12231-022-10

A:GS280-GCL-S-CHI-EC

REF.No.	PART No.	PART NAME	Q' TY/S. No.	I. C.	REMARKS
			A		
010	13963-6301-0	ASSY STARTER, CELL	1		
020	12234-6320-2	ASSY YOKE	1		
030	13968-6307-0	ASSY ARMATURE	1		
040	13968-6304-0	ASSY CLUTCH, SUB	1		
050	13968-6303-0	ASSY HOUSING	1		
060	12234-6345-2	ASSY FRAME	1		
070	13968-6338-0	ASSY HOLDER	1		
080	12234-6346-0	NUT, PINION STOP	1		
090	12234-6324-2	BUSH	1		
100	12234-6325-2	BUSH	1		
110	12654-6336-0	ASSY BRUSH, SUB	1		
120	12234-6378-0	O RING	2		
130	12234-6379-2	O RING	1		
140	12234-6322-0	RING, SNAP	1		
150	12234-6332-0	BOLT, THROUGH	2		
160	12234-6341-0	WASHER	2		
170	12234-6380-0	O RING	2		
180	13968-6349-0	SPRING	1		
190	13351-6342-0	WASHER	2		
200	12234-6343-0	WASHER	1		
210	14182-9203-0	NUT	1		
220	12234-9202-0	NUT	2		
230	12234-6314-0	SCREW	2		
240	12234-9411-0	WASHER, SPRING	2		
250	13968-6375-0	WIRE, STARTER	1		
260	12264-6308-0	ASSY CONTACTOR	1		

