

Robin Engine

Model EH 650

for **CHIKUSUI CANYCOM, INC**

PARTS CATALOG

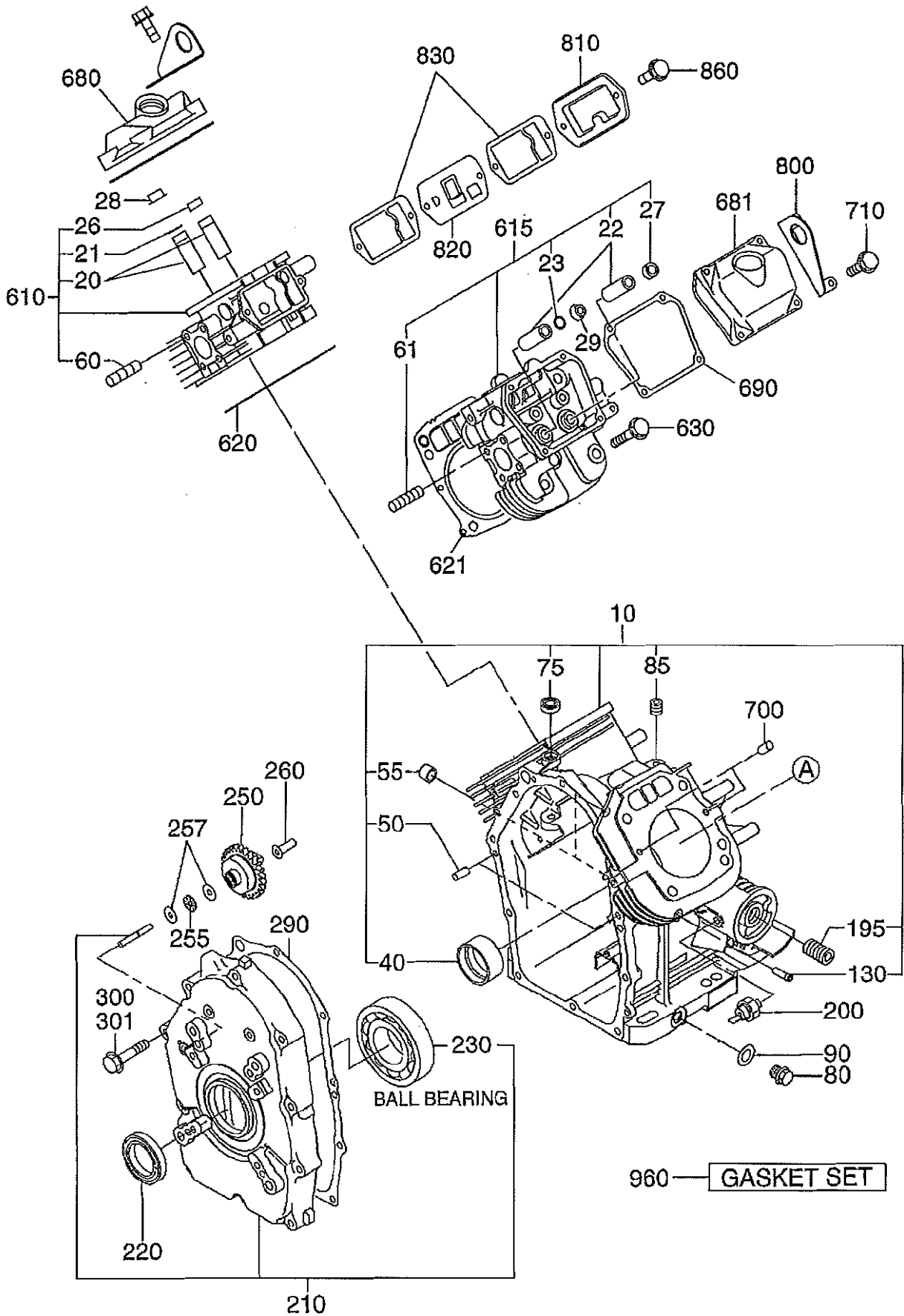
Spec. No. EH650DC7011/7031

ご注文の際は部品番号の前に **ZR** をご記入下さい。

富士重工業株式会社
FUJI HEAVY INDUSTRIES LTD.

ISSUE	
ISSUE DATE	2006.8

FIG. 100



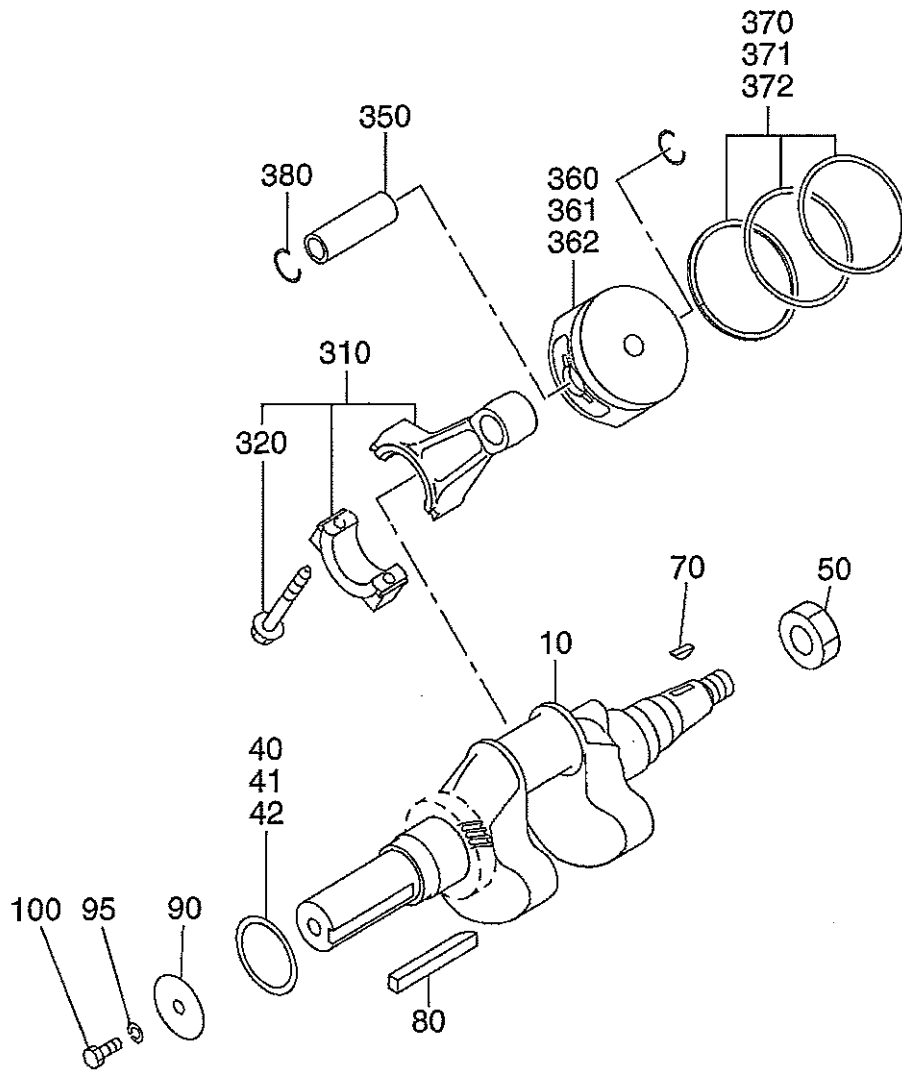
1 CRANK CASE GROUP

REF.	PART NUMBER	PART NAME	QTY	R E M A R K S	CODE NO.	INTERCHANGE P/NO.	UNIT P	FIG.
10	263-10111-01	CRANK CASE CP	1		-			100
20	263-14211-03	VALVE GUIDE	2	6DX11DX32. 5L	-			100
21	056-51000-50	CLIP	1	10. 7DX0. 9D	-			100
22	263-14211-03	VALVE GUIDE	2	6DX11DX32. 5L	-			100
23	056-51000-50	CLIP	1	10. 7DX0. 9D	-			100
26	132-07AA0-50	SEAL-INT VALVE	1		-			100
27	132-07AA0-50	SEAL-INT VALVE	1		-			100
28	263-35341-03	RETAINER PLATE	1	11DX17. 3DX27DX4. 7H	-			100
29	263-35341-03	RETAINER PLATE	1	11DX17. 3DX27DX4. 7H	-			100
40	263-15802-03	MAIN BEARING	1	45DX50DX23B W/STOPER	-			100
50	031-00801-00	DOWEL PIN	2		-			100
55	263-55601-03	PIPE	2	11DX8. 8DX8L	-			100
60	010-50802-90	STUD	4	M8X1. 25X30L	-			100
61	010-50802-90	STUD	4	M8X1. 25X30L	-			100
75	044-00800-10	OIL SEAL	1	8DX14DX4B	-			100
80	040-11400-30	PLUG	2	M14X1. 5X20DX12L	-			100
85	235-15421-03	BLIND PLUG	1	PT1/8X8L	-			100
90	021-11400-20	GASKET	2	14. 1DX19DX2. 3T	-			100
130	159-65401-03	PIPE (PULSE)	1	4DX6DX25L	-			100
195	263-15901-03	UNION	1	3/4X16UNFX30L	-			100
200	248-76301-01	SWITCH OIL PRESSURE	1		-			100
210	263-11001-31	MAINBEARING COVER CP	1		6727-			100
	263-11001-11	MAINBEARING COVER CP	1		-6726	263-11001-31		100
220	044-04200-30	OIL SEAL	1	42DX60DX9B	-			100
230	060-04500-10	BALL BEARING	1	45DX100DX25B	-			100
250	263-45003-01	GOVERNOR GEAR CP	1	52DX26T N=25	-			100
255	263-46215-A3	THRUST BEARING	1	6. 4DX17. 5DX2T	-			100
257	263-46214-A3	WASHER	2	6DX19DX1T	-			100
260	277-41901-03	GOVERNOR SLEEVE	1	6DX7. 6DX16DX26L	-			100
290	263-16002-A3	GASKET (M. B COVER)	1	T=0. 5	-			100
300	011-00802-20	FLANGE BOLT	10	M8X1. 25X17DX45L	-			100
610	263-13211-01	CYLINDER HEAD 1 CP	1		-			100
615	263-13311-01	CYLINDER HEAD 2 CP	1		-			100
620	263-15021-11	GASKET 1 (CYL HEAD)	1	T=0. 4	-			100
621	263-15121-01	GASKET 2 (CYL HEAD)	1	T=0. 4	-			100
630	011-01000-70	FLANGE BOLT	8	M10X1. 25X19DX65L	-			100
680	280-15501-A3	ROCKER COVER	1		-			100
681	263-15501-A3	ROCKER COVER	1		-			100
690	263-16101-A3	GASKET (ROCKER COVER)	2	T=0. 4	-			100
700	031-00600-20	DOWEL PIN	4	6DX14. 5L	-			100

1 CRANK CASE GROUP

REF.	PART NUMBER	PART NAME	QTY	R E M A R K S	CODE NO.	INTERCHANGE P/NO.	UNIT P	FIG.
710	011-00601-01	FLANGE BOLT	8	M6X1.0X13DX28L	-			100
800	280-19001-A3	HOOK	2		-			100
810	263-14301-03	BREATHER COVER	1		-			100
820	280-14401-A1	BREATHER PLATE CP	1		-			100
830	263-16006-03	GASKET (BREATHERPLATE)	2	T=1.5	-			100
860	011-00600-30	FLANGE BOLT	2	M6X1.0X14DX14L	-			100
960	263-99001-27	GASKET SET	1		-			100

FIG. 200



2 CRANK, PISTON GROUP

REF.	PART NUMBER	PART NAME	QTY	R E M A R K S	CODE NO.	INTERCHANGE P/NO.	UNIT P	FIG.
10	263-20201-11	CRANK SHAFT CP	1	L=378 35DX80L	-			200
40	263-25012-A3	SPACER	1	45.3DX58DX0.8T	-			200
41	263-25013-A3	SPACER	1	45.3DX58DX1.0T	-			200
42	263-25014-A3	SPACER	1	45.3DX58DX1.2T	-			200
50	018-01800-10	FLANGE NUT	1	M18X15X31DX14H	-			200
70	005-32054-01	WOODRUFF KEY	1		-			200
80	005-30105-01	KEY	1		-			200
90	020-01000-30	WASHER	1	10.5DX45DX4.5T	-			200
95	003-20100-00	SPRING WASHER	1		-			200
100	001-66102-50	BOLT	1		-			200
310	263-22601-10	CONNECTING ROD AY	2	117C0X30B 39D-21D	6727-			200
	263-22601-00	CONNECTING ROD AY	2	117C0X30B 39D-21D	-6726			200
311	263-22602-00	CONNECTING ROD AY	2	0.25 U. S.	-			200
320	001-05084-00	FLANGE BOLT	4		-			200
350	263-23301-23	PISTON PIN	2	21DX15DX64.2L	6666-			200
	263-23301-03	PISTON PIN	2	21DX15DX64.2L	-6665	263-23301-23		200
360	263-23401-03	PISTON	2	STD (80DX55H)	-			200
361	263-23402-03	PISTON	2	0.25 O. S. (80DX55H)	-			200
362	263-23403-03	PISTON	2	0.50 O. S. (80DX55H)	-			200
370	263-23501-07	PISTON RING SET	2	STD (80D)	-	263-23501-17		200
371	263-23502-07	PISTON RING SET	2	0.25 O. S. (80D)	-	263-23502-17		200
372	263-23503-07	PISTON RING SET	2	0.50 O. S. (80D)	-	263-23503-17		200
380	056-52100-20	CLIP	4	22.1DX1.4D	-			200

FIG. 300

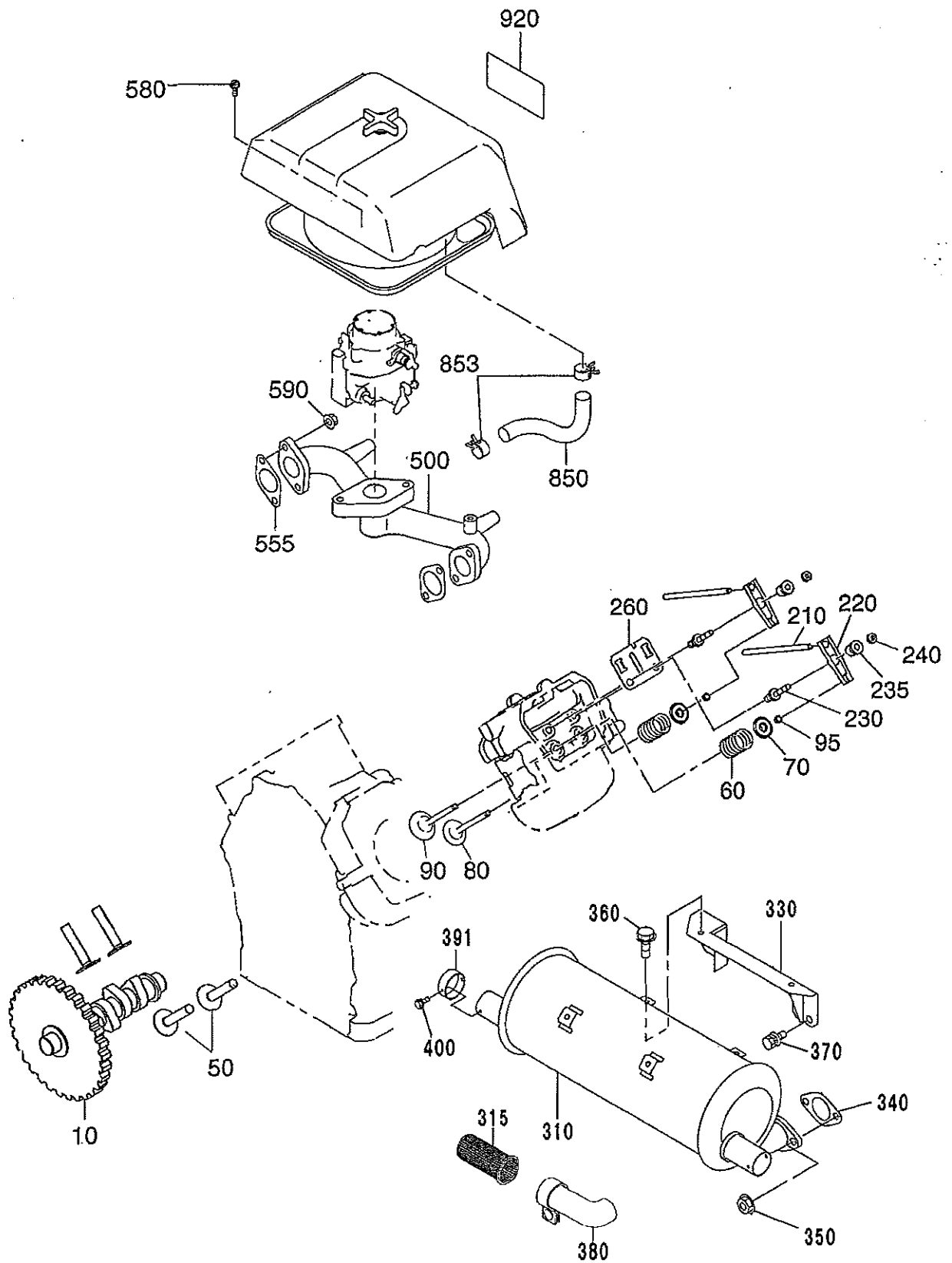
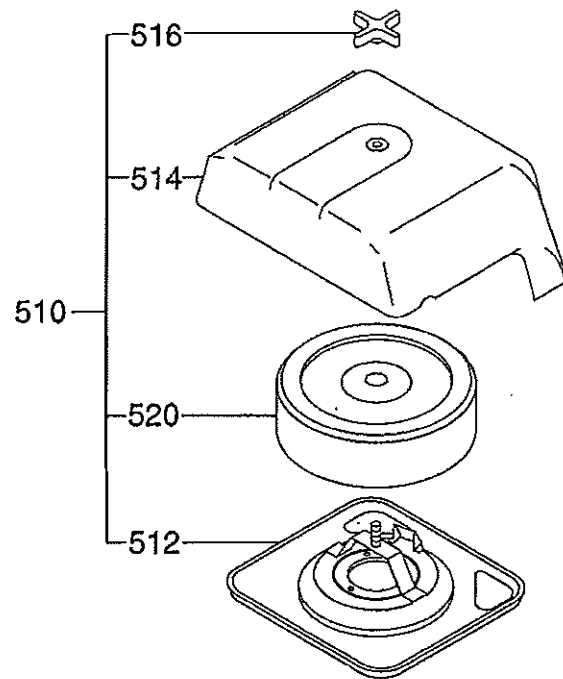


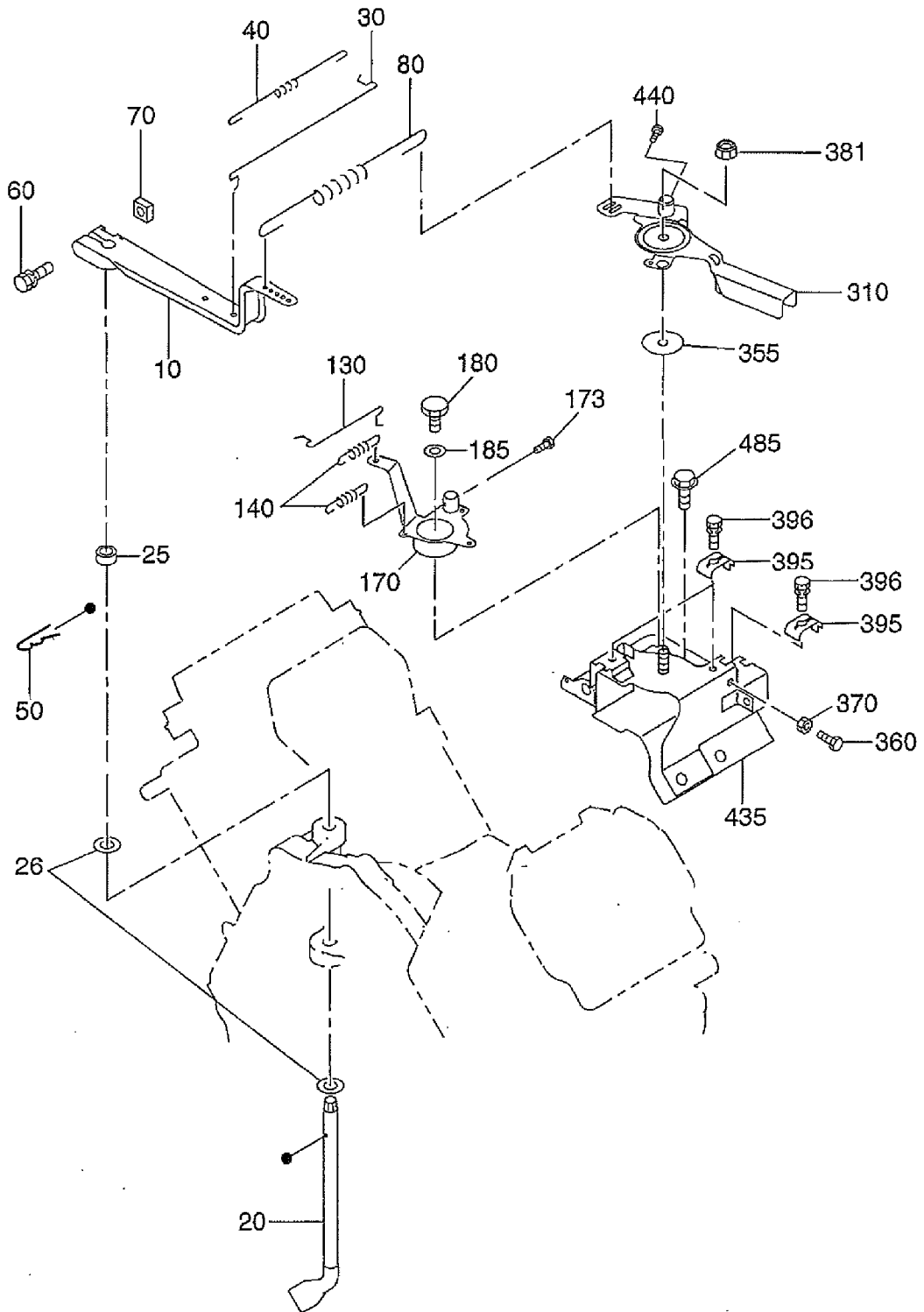
FIG. 315



3 INTAKE, EXHAUST GROUP

REF.	PART NUMBER	PART NAME	QTY	R E M A R K S	CODE NO.	INTERCHANGE P/NO.	UNIT P	FIG.
10	280-31701-13	CAM SHAFT	1	L=169 133DX12B N=66	-			300
50	263-33301-A3	TAPPET	4	27DX9DX48L	-			300
60	246-33611-03	VALVE SPRING	4	22. 2DX2. 9DX37L N=6. 5	--			300
70	246-33711-13	SPRING RETAINER	4	7. 6DX26DX8T	-			300
80	263-33401-03	INTAKE VALVE	2	35DX6DX79. 8L	-			300
90	263-33502-13	EXHAUST VALVE	2	31DX6DX80. 3L	-			300
95	246-35501-03	COLLET-VALVE	8		-			300
210	263-35321-B1	PUSH ROD CP	4	8DX138. 5L	-			300
220	267-36101-13	ROCKER ARM	4		-			300
230	261-35801-13	BOLT (PIVOT)	4		--			300
235	267-35701-03	PIVOT	4		-			300
240	017-00601-10	NUT	4	M6X0. 75X3. 6H	--			300
260	263-37001-A3	GUIDE PLATE	2		-			300
310	263-30101-A1	MUFFLER	1	HIGH MOUNT TYPE	-	263-30101-H1		300
315	263-37321-H2	SPARK ARRESTER	1		-			300
330	263-37001-A1	BRACKET MUFFLER	1		--	263-37001-H1		300
340	270-35201-01	GASKET CP (MUFFLER)	2	T=0. 4 30D 8. 5DX52P	-			300
350	018-00800-10	FLANGE NUT	4	M8X1. 25X17DX7. 5H	--			300
360	011-00600-10	FLANGE BOLT	2	M6X1. 0X14DX8L	-			300
370	001-14082-00	BOLT AND WASHER AY	2		--			300
380	263-37301-H1	DEFLECTER AY	1		-			300
391	263-37341-A1	EXHAUST OUTLET CAP	1	32. 5DX12HX1. 2T	--	263-37341-H1		300
400	015-00400-90	TAPPING SCREW	2	M4X12L	6545-			300
	263-37361-A3	SCREW, FLANGE TAPPING	2		-6544			300
500	280-33001-C3	INTAKE MANIFOLD	1		-			300
555	263-35503-A3	GASKET (IN MANIFOLD)	2	T=0. 4 31D 8. 5DX52P	-			300
580	011-00600-20	FLANGE BOLT	3	M6X1. 0X14DX12L	-			300
590	002-38080-00	FLANGE NUT	4		-			300
850	263-18003-03	RUBBER PIPE	1	14. 5DX20. 5D FORMED	--			300
853	056-12000-20	HOSE CLAMP	2	20DX10BX1T	-			300
920	263-91707-03	LABEL (TRADE MARK)	1	50X95	-			300
510	280-32601-A0	AIR CLEANER AY	1		--			315
512	280-32620-A1	CLEANER BASE CP	1		-			315
514	263-32630-03	CLEANER COVER	1		-			315
516	263-32640-01	WING NUT	1		-			315
520	263-32610-A1	CLEANER ELEMENT CP	1		-			315

FIG. 400



4 GOVERNOR GROUP

REF.	PART NUMBER	PART NAME	QTY	REMARKS	CODE NO.	INTERCHANGE P/NO.	UNIT P	FIG.
10	263-42301-B3	GOVERNOR LEVER	1		-			400
20	263-42201-A3	GOVERNOR SHAFT	1		-			400
25	X23-00801-50	SPACER	1	8.3DX11.9DX6.4T	-			400
26	003-10080-00	WASHER	2		-			400
30	263-42701-A3	GOVERNOR ROD	1		-			400
40	263-42801-03	ROD SPRING	1	6DX0.5DX102L N=29	-			400
50	005-11060-01	SNAP PIN	1		-			400
60	001-14063-00	BOLT AND WASHER AY	1		-			400
70	018-60600-20	NUT	1	M6X1.0X4.9H SQUARE	-			400
80	263-42501-A3	GOVERNOR SPRING	1	10.5DX1.2DX139L N=36	-			400
130	263-46011-A3	CHOKE CONTROL ROD	1		-			400
140	261-45201-03	RETURN SPRING	2	6.80X0.7DX35L N=15	-			400
170	263-46001-01	CHOKE CONTROL LINKCP	1	W/SWIVEL	-			400
173	004-31040-80	SCREW	1		-			400
180	226-43101-01	LINK PIVOT CP	1		-			400
185	X23-01000-80	SPACER	1		-			400
310	263-43312-01	SPEED CONT. LEVER CP	1		-			400
355	261-45301-03	SPACER	1		-			400
360	011-50500-20	BOLT	2	M5X0.8X35L	-			400
370	002-27050-00	NUT	2		-			400
381	002-38060-00	FLANGE NUT	1		-			400
395	261-43901-03	CLAMP	2		-			400
396	001-17052-00	BOLT & WASHER AY	2		-			400
435	263-45021-A2	BRACKET (SPD CONTROL)	1		-			400
440	004-31040-80	SCREW	1		-			400
485	011-00600-20	FLANGE BOLT	2	M6X1.0X14DX12L	-			400

FIG. 500

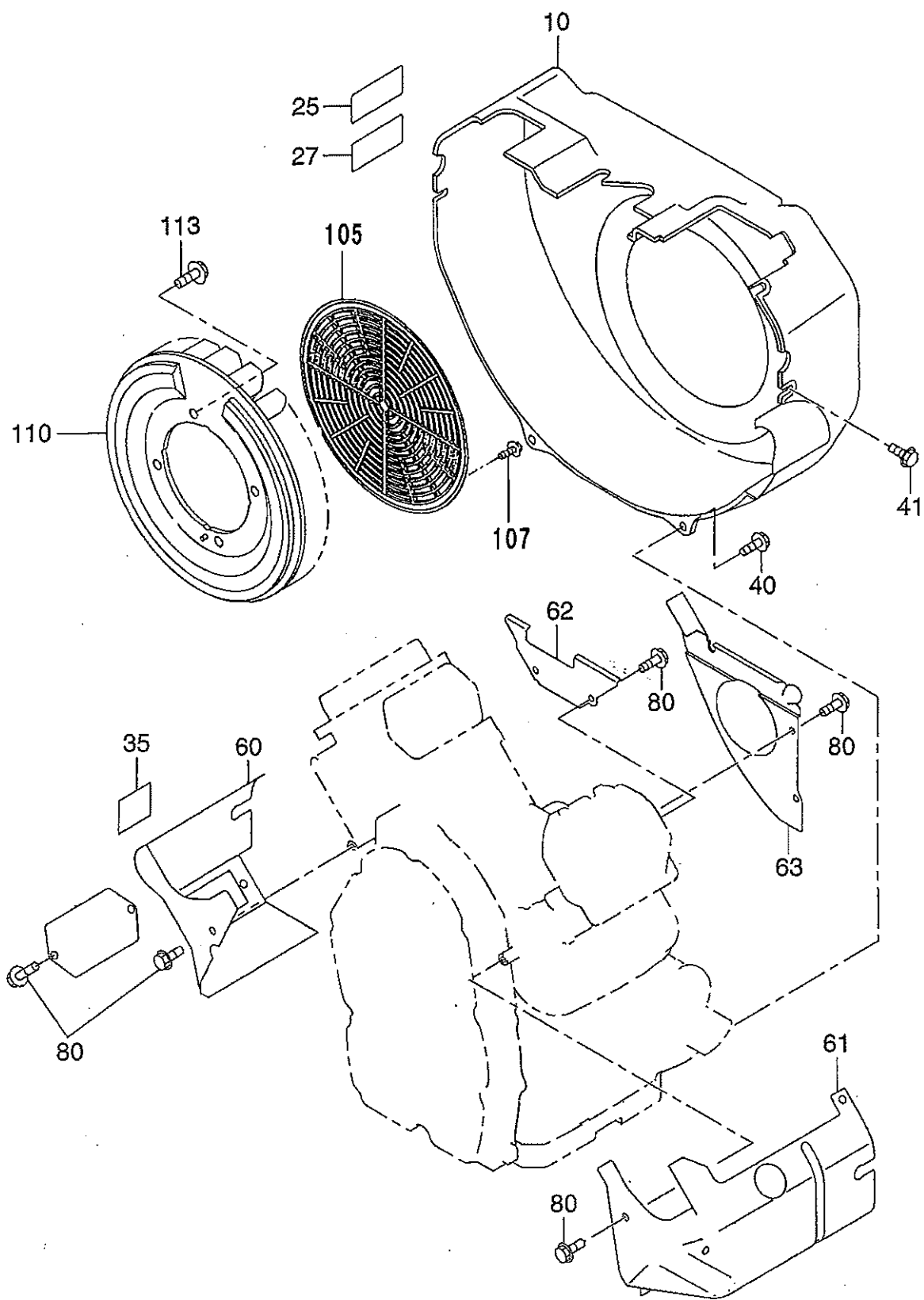
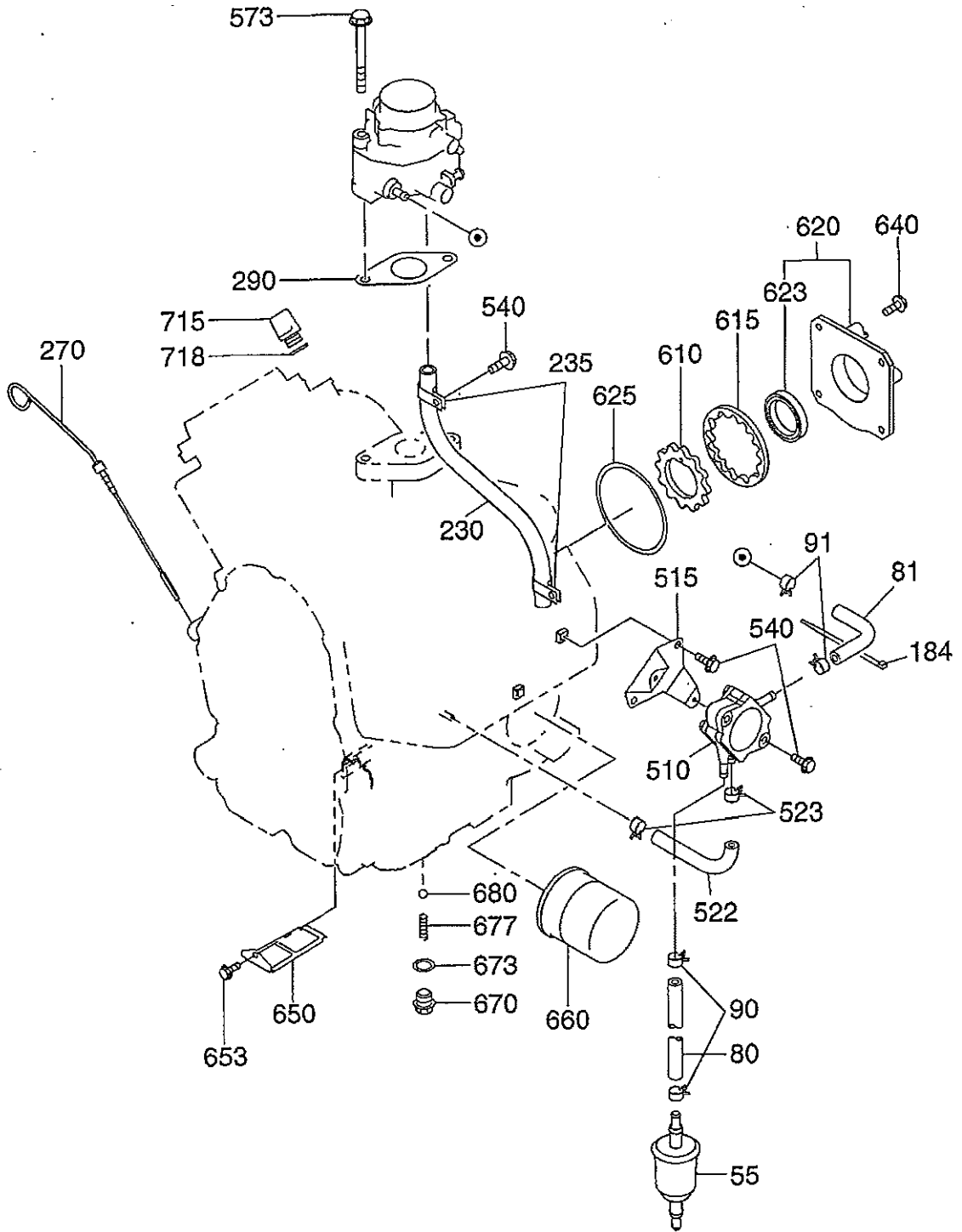


FIG. 600

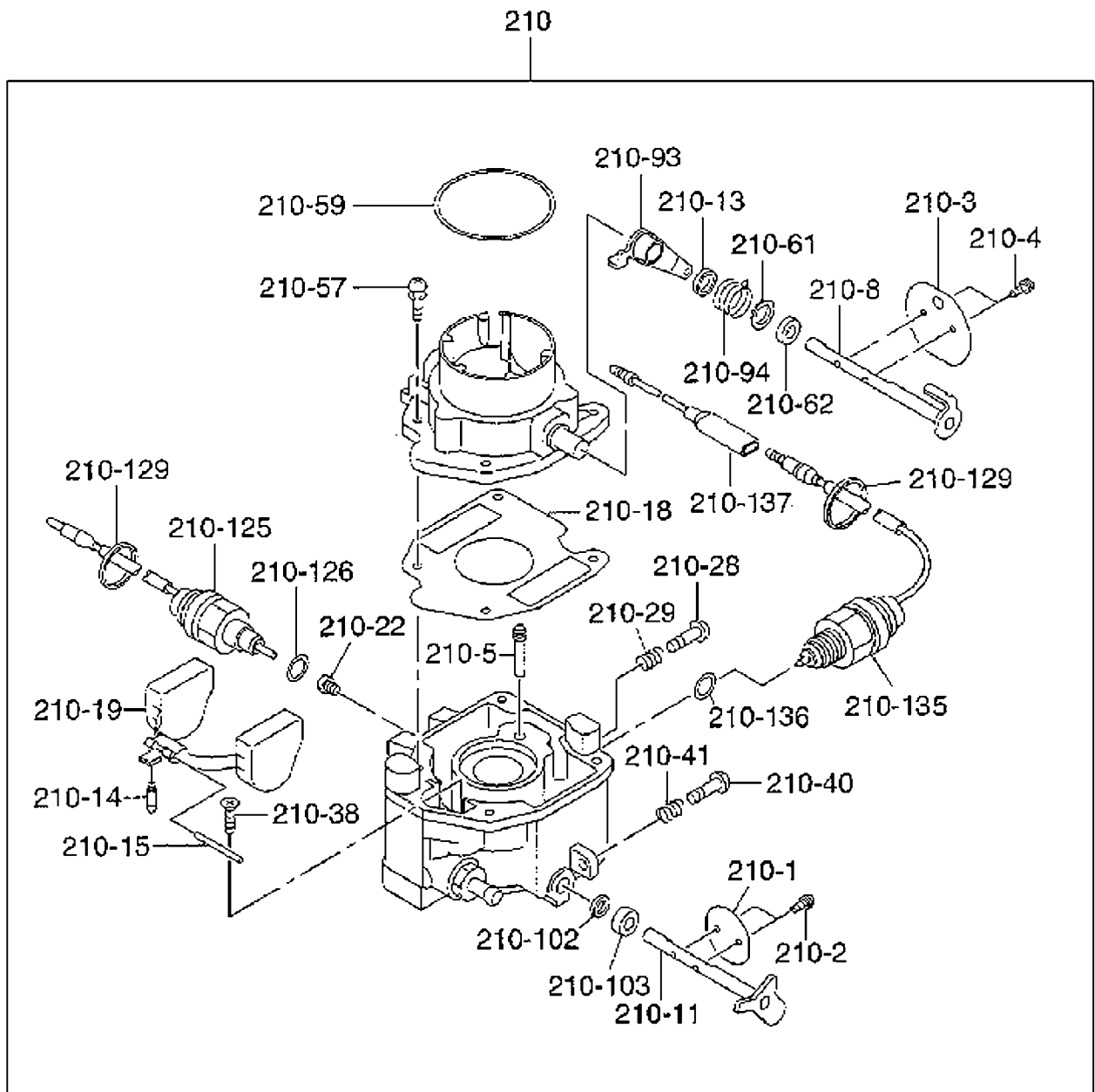


6 FUEL LUBRICANT GROUP

REF.	PART NUMBER	PART NAME	QTY	REMARKS	CODE NO.	INTERCHANGE P/NO.	UNIT P	FIG.
55	263-65012-A3	FILTER, FUEL	1		-			600
80	263-68007-B3	RUBBER PIPE	1	6. 4DX12. 7DX80L	-			600
	X85-10617-80	EH650DC7031	1		-			600
81	263-68006-B3	RUBBER PIPE	1	6. 4DX12. 7DX430L	-			600
	X85-10616-60	EH650DC7031	1		-			600
90	263-68501-03	HOSE CLAMP	2	11. 4DX7. 9BX0. 7T	-			600
	056-11100-20	EH650DC7031	2		-			600
91	263-68501-03	HOSE CLAMP	2	11. 4DX7. 9BX0. 7T	-			600
	X85-10617-80	EH650DC7031	2		-			600
230	085-10301-10	RUBBER PIPE	1	3DX6DX350L	-	085-10300-00		600
235	206-75501-01	CLAMP CP	2	10DXM6X12BX0. 6T	-			600
270	263-63603-01	OIL GAUGE CP	1		-			600
290	263-66201-A3	GASKET (CARBURETOR)	1	T=0. 4 34D 8. 5DX84. 5P	-			600
510	267-62201-10	FUEL PUMP AY	1		-			600
515	263-65002-A3	BRACKET (FUEL PUMP)	1		-			600
522	263-68008-B3	RUBBER PIPE	1	6. 4DX12. 7DX160L	-			600
523	263-68501-03	HOSE CLAMP	2	11. 4DX7. 9BX0. 7T	-			600
540	011-00600-20	FLANGE BOLT	5	M6X1. 0X14DX12L	-			600
573	011-00801-10	FLANGE BOLT	2	M8X1. 25X14DX80L	-			600
610	263-63901-03	INNER ROTOR	1		-			600
615	263-63902-03	OUTER ROTOR	1		-			600
620	263-64001-11	OIL PUMP COVER CP	1		-			600
623	044-03501-70	OIL SEAL	1	35DX48DX8B	-			600
625	X24-08900-30	O RING	1	88. 2DX94. 4D	-			600
640	011-00600-30	FLANGE BOLT	4	M6X1. 0X14DX14L	-			600
650	263-64302-02	OIL PUMP FILTER UN	1		-			600
653	263-65011-A3	FLANGE BOLT	1		-			600
660	248-65801-00	OIL FILTER AY	1		-			600
670	263-65001-13	PLUG (OIL RELIEF)	1	M14X1. 5X20DX12L	-			600
673	003-70140-00	GASKET, ALUMINUM	1		-			600
677	263-66001-03	SPRING (RELIEF VALVE)	1	7. 8DX1DX25L N=8. 5	6515-			600
	248-65601-03	SPRING (RELIEF. VALVE)	1	7DX1DX23. 5L N=7	-6514			600
680	006-90308-00	STEEL BALL	1		-			600
715	280-63602-A3	OIL FILLER CAP	1		-			600
718	263-64414-A3	O RING	1	26. 6DX31. 9D	-			600

EH650DC7011, EH650DC7031 チクスイヤニコム, クサカキ

FIG. 640



6 FUEL LUBRICANT GROUP

REF.	PART NUMBER	PART NAME	QTY	R E M A R K S	CODE NO.	INTERCHANGE P/NO.	UNIT P	FIG.
210	263-62382-00	CARBURETOR AY	1		-			640
- 1	263-62535-08	VALVE, THROTTLE	1		-			640
- 2	261-62352-08	SCREW, VALVE SET	2		-			640
- 3	263-62528-08	VALVE, CHOKE	1		-			640
- 4	258-62555-08	SCREW SET (VALVE)	2		-			640
- 5	258-62420-08	JET (SLOW)	1		-			640
- 8	263-62520-08	SHAFT ASSY, CHOKE	1		-			640
- 11	263-62530-08	SHAFT ASSY, THROTTLE	1		-			640
- 13	258-62551-08	RING (CHOKE LEVER)	1		-			640
- 14	226-62501-08	VALVE, FLOAT	1		-			640
- 15	258-62515-08	FLOAT PIN	1		-			640
- 18	280-62545-08	GASKET, AIR HORN	1		-			640
- 19	280-62505-08	FLOAT	1		-			640
- 22	263-62400-08	JET, MAIN	1		-			640
- 28	215-62353-08	SCREW, DRAIN	1		-			640
- 29	215-62446-08	SPRING, DRAIN	1		-			640
- 38	258-62556-08	SCREW SET (FLOAT PIN)	1		-			640
- 40	263-62451-08	SCREW, THRO. ADJUST	1		-			640
- 41	258-62445-08	SPRING (ADJUST SCREW)	1		-			640
- 57	258-62450-08	SCREW SET (AIR HORN)	4		-			640
- 59	263-62560-08	O-RING, AIR HORN	1		-			640
- 61	280-62551-08	COLLAR, CHOKE	1		-			640
- 62	258-62554-08	FILTER (CHOKE SHAFT)	1		-			640
- 93	263-62524-08	LEVER ASSY, CHOKE	1		-			640
- 94	263-62445-08	SPRING, CHOKE	1		-			640
-102	226-62580-08	FILTER, AIR	1		-			640
-103	258-62570-08	COLLAR (THRO. SHAFT)	1		-			640
-125	263-62556-08	VALVE CP, (SOLENOID)	1		-			640
-126	258-62546-08	GASKET, MAIN PASSAGE	1		-			640
-129	258-62566-08	CLAMP (SOLENOID) WIRE	2		-			640
-135	263-62557-08	VALVE ASSY, SOLENOID	1		-			640
-136	263-62555-08	GASKET	1		-			640
-137	258-62572-08	CORD AY	1		-			640

FIG. 700

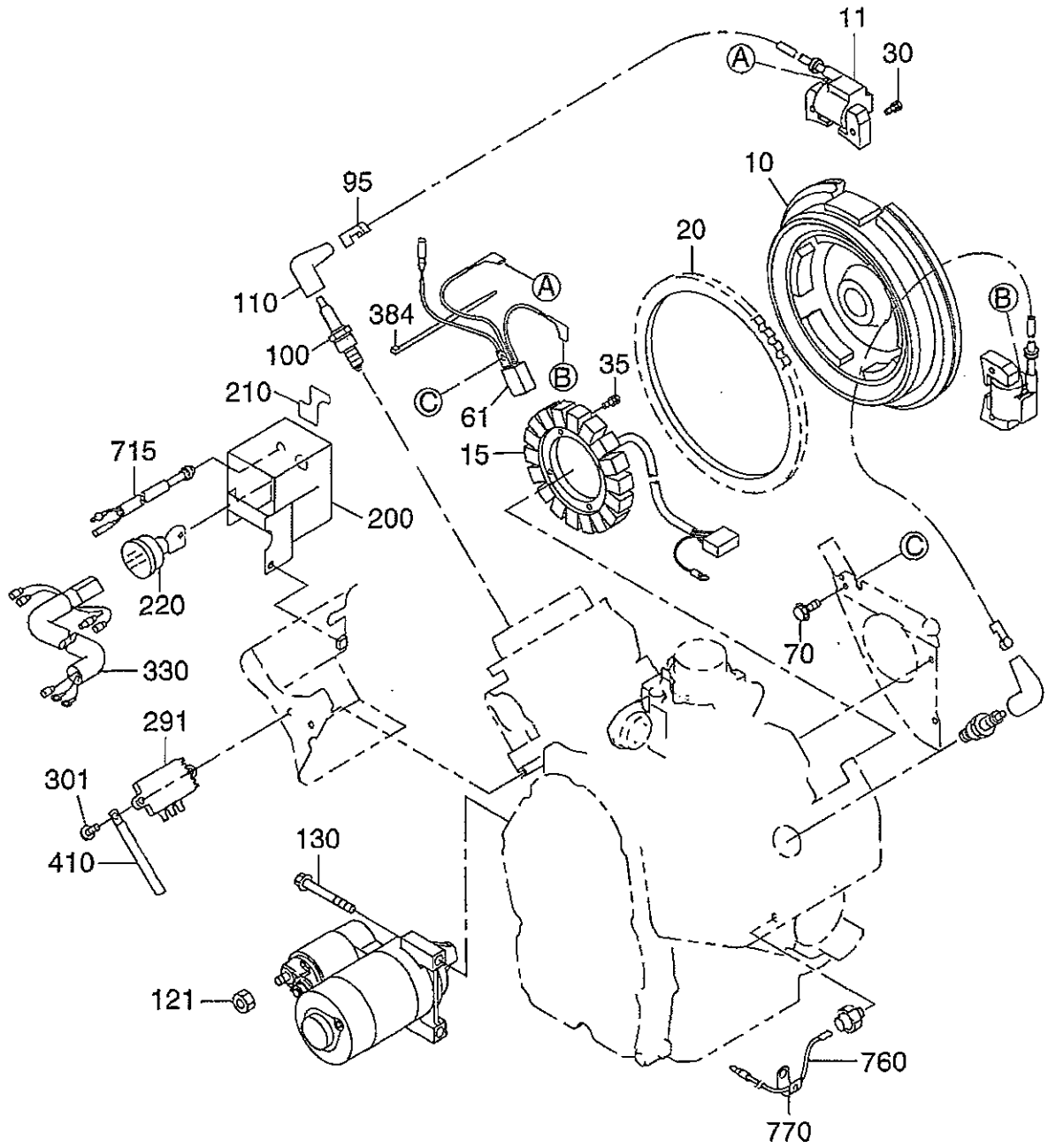
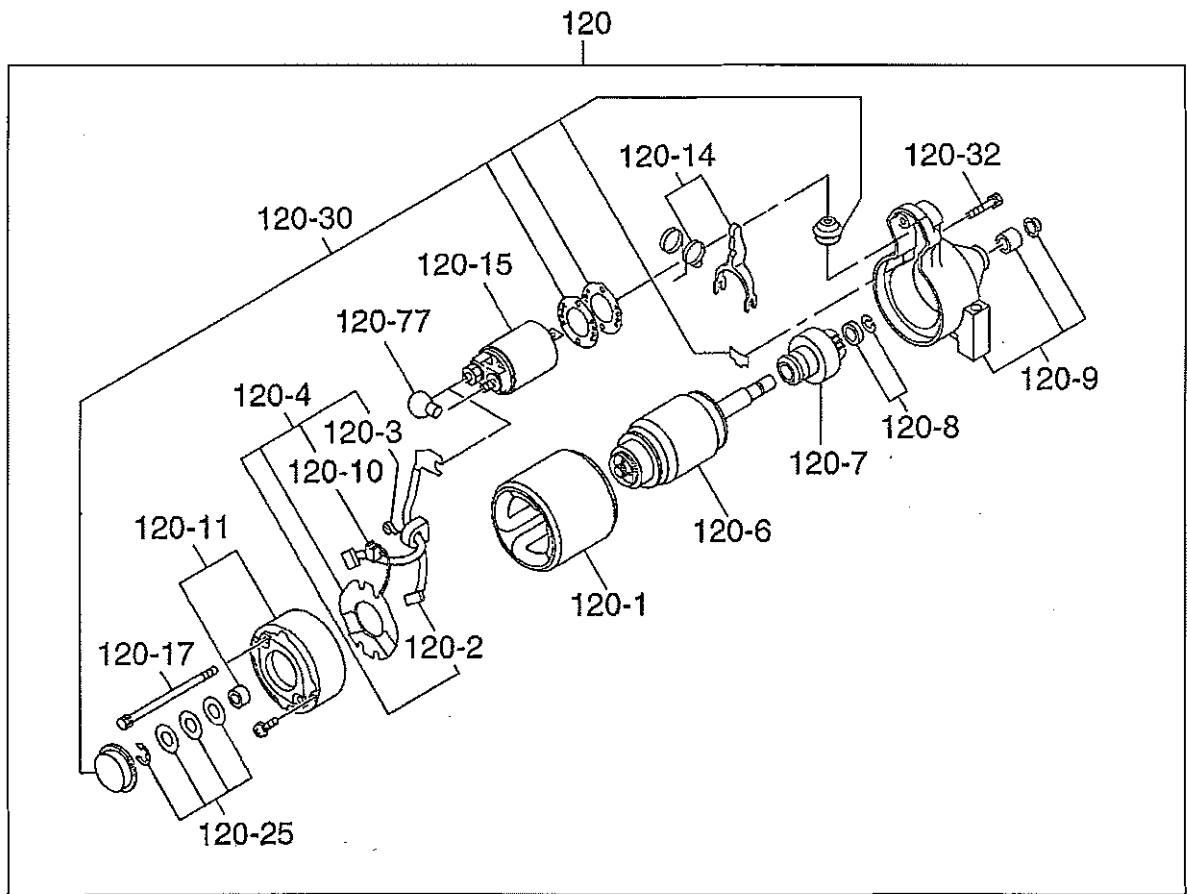


FIG. 730



7 ELECTRIC DEVICE GR

REF.	PART NUMBER	PART NAME	QTY	R E M A R K S	CODE NO.	INTERCHANGE P/NO.	UNIT P	FIG.
10	263-77202-11	FLYWHEEL CP	1		-			700
11	263-78202-11	IGNITION COIL CP	2	MARK AF	-6768			700
	263-78203-01	IGNITION COIL CP	2	MARK AK	6769-			700
	263-73126-H1	WIRE CP	1		6769-			700
15	263-79411-A1	CHARGE COIL CP	1		-			700
20	263-71001-03	RING GEAR	1	202DX233DX8. 7B N=90	-			700
30	001-14062-50	BOLT AND WASHER AY	4		-			700
35	001-16052-00	BOLT AND WASHER AY	4		6576-			700
	001-17052-00	BOLT & WASHER AY	4		6515-6575			700
	013-10500-40	SCREW AND WASHER AY	4	M5X0. 8X20L W/SW	-6514			700
61	KU3-11052-21	STOP DIODE CP	1		-6768			700
70	011-00600-10	FLANGE BOLT	1	M6X1. 0X14DX8L	-6768			700
95	065-90000-10	PLUG TERMINAL	2		-			700
100	065-01402-80	SPARK PLUG	2	NGK BPR5ES	-			700
110	X65-51000-10	SPARK PLUG CAP	2		-			700
121	002-38080-00	FLANGE NUT	1		-			700
130	011-00801-00	FLANGE BOLT	2	M8X1. 25X17DX65L	-			700
291	263-71901-01	REGULATOR CP	1		-			700
301	011-00601-40	FLANGE BOLT	2	M6X1. 0X14DX18L	-			700
384	056-30000-10	WIRE BAND	3	4. 5BX1. 2TX200L	-			700
410	056-60002-50	CLAMP	1	6. 5DX10BX95LX0. 6T	-			700
760	263-73102-11	WIRE AY(OIL PRE. SW.)	1	L=900 GRAY	-			700
770	206-75501-01	CLAMP CP	2	10DXM6X12BX0. 6T	-			700

7 ELECTRIC DEVICE GR

REF.	PART NUMBER	PART NAME	QTY	REMARKS	CODE NO.	INTERCHANGE P/NO.	UNIT P	FIG.
120	263-70502-A0	STARTING MOTOR AY	1		-			730
- 1	255-70580-08	YOKE AY	1		-			730
- 2	255-70551-08	BRUSH SET	1		-			730
- 3	228-70516-08	BRUSH SPRING	4		-			730
- 4	255-70531-08	BRUSH HOLDER AY	1		-			730
- 6	263-70510-08	ARMATURE ASS' Y	1		-			730
- 7	255-70521-08	PINION AY	1		-			730
- 8	210-70534-08	PINION STOPPER SET	1		-			730
- 9	263-70500-08	GEAR CASE ASS' Y	1		-			730
- 10	228-70514-08	BRUSH (-)	2		-			730
- 11	263-70505-08	REAR COVER ASS' Y	1		-			730
- 14	243-70525-08	SHIFT LEVER KIT	1		-			730
- 15	263-70515-08	MAGNETIC SWITCH AY	1		-			730
- 17	207-70524-08	THROUGH BOLT	2		-			730
- 25	263-70550-08	THRUST WASHER KIT	1		-			730
- 30	255-70570-08	DUST COVER KIT	1		-			730
- 32	263-70551-08	06 BOLT (M6X37)	2		-			730
- 77	207-70526-08	RUBBER CAP BS	1		-			730

FIG. 900

